



A CARTOGRAPHIC SOFTWARE
FOR SAFE NAVIGATION



CALHYPSO

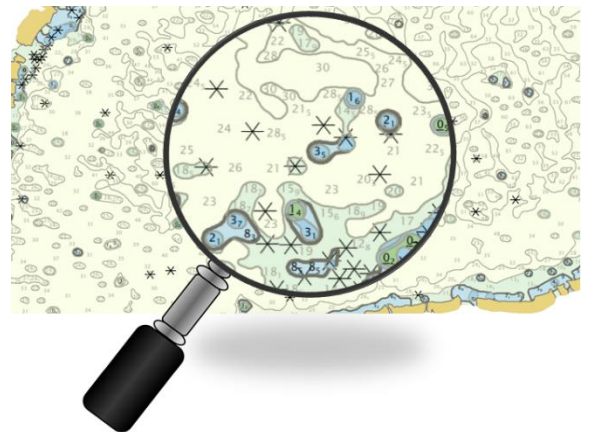
CALHYPSO is a software dedicated to **cartographers** and **hydrographers** offering a tool box that revolutionise creation, control and correction of electronic navigational charts (ENC).

AUTOMATION FOR SAFETY

CALHYPSO includes four tools able to automate :

- Safe de-densification of points cloud
- Cartographic generalisation and S-57 ENC production
- Security control of ENC
- Detection of new and unmapped dangers

Highlighting of navigation dangers is a capital issue of marine security. CALHYPSO **revolutionise bathymetric data processing** with innovative tools able to identify those dangers and to map them **in a record time**.



BOTH SHOM AND GEOMOD EXPERTISE IN A SOLUTION

CALHYPSO is a software closely developed with Shom cartographers and hydrographers. Designed by and for them, it fulfils modern **challenges of security and performance** taken up by hydrographic agencies.



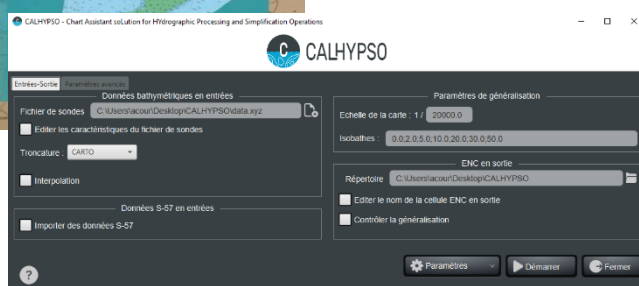
L'océan en référence

CALHYPSO OPEN IN TWO FORMATS



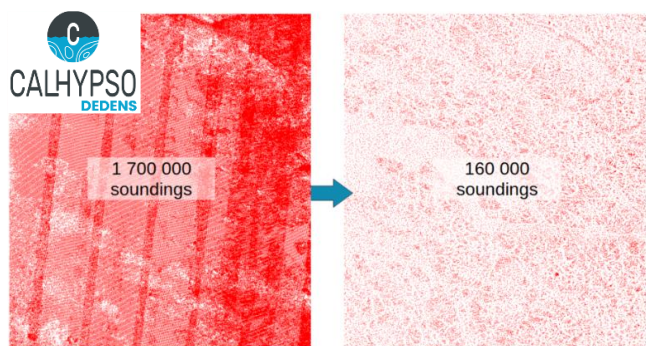
The application **CALHYPSO Web** is ideal to test the cartographic generalisation tool in a simple way.

The tool **CALHYPSO Desktop** can easily be set up in a production chain of navigation charts (possible execution via IHM or command line, compatibility with CARIS data formats etc.)

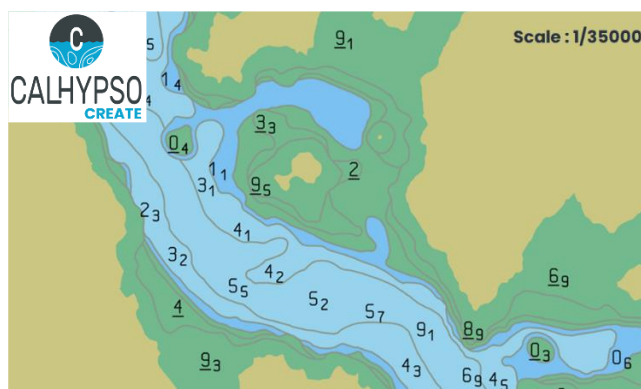


Request a demo access now
and test CALHYPSO with your
own dataset!

CALHYPSO IN FOUR TOOLS



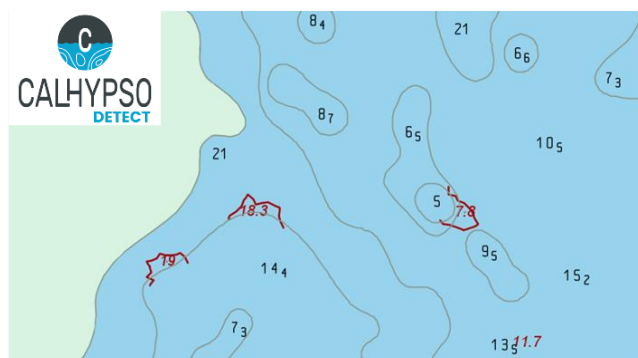
CALHYPSO-Dedens extract of high density dataset a **safe bathymetric coverage** containing all navigation dangers. This relies on a **innovative triangulation** developed by both Shom and Geomod expertise. The allows acceleration of all bathymetric processing conducted by cartographers and hydrographers.



CALHYPSO-Create **synthesize automatically and quickly bathymetric in a safe navigation map** fulfilling IHO S-57 standards. CALHYPSO-Create process high density dataset, build a sounding triangulation, run depth contours computation and generalisation and launch a sounding selection according to scale. This tool generates the cartography of a **one million points dataset in less than 2 minutes**.



CALHYPSO-Control generalisation control tool looks for cartographic representation errors in a S-57 ENC. The algorithm alert on anomalies related to **security risks** and on representation deviations from **readability rules** required. To this end, the tool compare a produced ENC with its source survey dataset.



CALHYPSO-Detect dangers detection tool compare a new survey dataset with active ENC maps on this region and **highlight unmapped dangers**. These detections can be broadcast as notices to mariners. The amount of detections raised during this first analysis can also justify the production on a new map on this region.

CALHYPSO, PortAll, ULYSSES, PortSide are developed by **Geomod**, a software company specialized in marine geomatics products in alignment with the IHO standards. Our main clients are NAVAL GROUP, SHOM, IFREMER, GENAVIR, THALES, Harbours (Le Havre, Rouen, Nantes Saint-Nazaire) and Harbours mariners unions (Marseille-Fos, Dunkerque, Sète).

GEOMOD BREST

305, rue Jurien de la Gravière
29 200 BREST
☎ +33 (0) 2 98 05 55 91
✉ calhyppo@geomod.fr

WWW.GEOMOD.FR



@Geomod

